

Since 1938  
**INTERSTATE**™  
*Window & Door Co.*



**InVision**™  
*Model 6800 Vinyl Windows*

**Model 6800**

*Finally. . .the Window  
that has it All!*

*Advanced Design*



# State of the Art Window Design

Remarkable beauty, exceptional performance and distinctive design of the InVision Model 6800 window leads the way in energy efficient vinyl windows from Interstate. World class engineering and advanced material science create a new window standard for performance, economy, strength and efficiency.

Anti-drift design feature keeps top sash in place when operating lower sash.



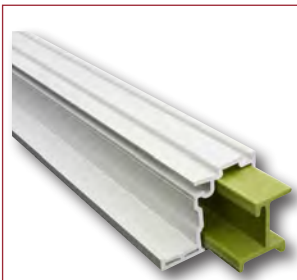
Patented Light Lift™ SP Sash Balance System on all InVision double hung windows for easy and quiet lifting and closing.



Low profile composite lock and tilt latches provide unobstructed views.



Optional Robo-Sync lock system provides easy locking and tilt-to-clean from one central point with a smooth, fully concealed tilt latch sight line.



InNergy composite reinforcement for high structural loads. Double hung meets a **PG-55** structural rating at wind driven rain speed of 148 mph at 40" x 63" gateway size.

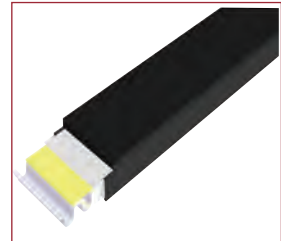


Rounded edges create a stunning window appearance with superior paint & lamination adhesion.

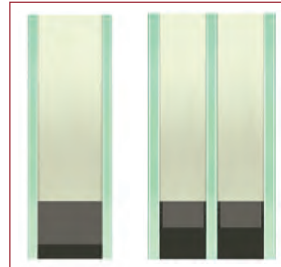
Multiple internal chambers designed for superior structural and thermal performance



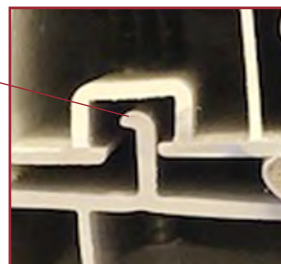
Duralite insulating glass spacer technology adds to energy savings and comfort, and greatly reduces condensation in winter months.



Dual & triple glazing options for maximum energy savings.



Patented storm interlock design for maximum negative pressure structural performance.

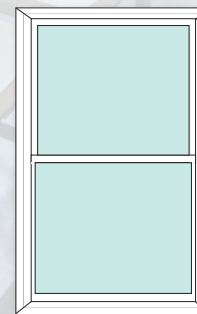


# Unmatched Performance

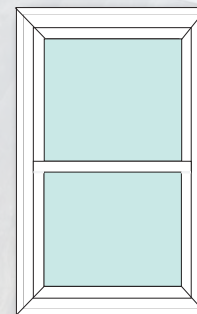


*More Glass + More Light = More Window*

InVision  
Vinyl Window



Traditional  
Windows



The InVision Model 6800 Window has a narrow, slim-line design to provide up to 20% more glass, light, and beauty. The jamb and sash projections are uniquely expanded slightly toward the exterior which additionally provide extreme thermal and structural integrity.

## WHOLE WINDOW NFRC\* CERTIFIED GLASS PACKAGES

	U-Factor	SHGC
<b>Dual Energy Saver</b> Double Hung - <i>Low E + clear; argon</i>	<b>.26</b>	<b>.28</b>
Dual HeatGuard 362 - <i>Low E 362 + clear; argon</i>	<b>.26</b>	<b>.21</b>
Energy Saver IS - <i>Low E + Low E inside surface; argon</i>	<b>.23</b>	<b>.27</b>



<b>Triple Traditional</b> <i>Low E + clear + clear; argon + argon</i>	<b>.21</b>	<b>.26</b>
--	------------	------------



### Triple Fuel Saver

Double Hung - <i>Low E + Low E + clear; argon + argon</i>	<b>.16</b>	<b>.21</b>
--	------------	------------



**Extreme energy efficiency • Outperforms virtually any window on the market • U-Factors as low as .13**

## DURALITE™ INSULATED GLASS SPACER

Interstate's Duralite Insulated Glass Spacer System insulates the edge of glass better than any other foam or metal spacer. It is hollow, trapping air for maximum thermal performance.

The InVision Window has been designated as "Envirosealed" which saves energy, saves money and helps to save the environment.



## AIR INFILTRATION

The lower the air infiltration, the better a product is at keeping air out, saving energy and keeping you comfortable.



**ENERGY STAR Qualification**  
**0.30 cfm/ft<sup>2</sup>**



**InVision 6800 Double Hung**  
**0.05 cfm/ft<sup>2</sup>**

InVision 6800 DOUBLE HUNG has 6 times LESS air leakage than ENERGY STAR Qualification



**InVision 6800 Casement**  
**0.02 cfm/ft<sup>2</sup>**

InVision 6800 CASEMENT has 15 times LESS air leakage than ENERGY STAR Qualification



\* National Fenestration Rating Council

*Safety, Security & Style*



# Window Styles



**Double Hung** windows are the most popular window style. Both sashes raise & lower and tilt inside to clean.



**Basement/Hopper** window tips in for ventilation and is available with optional Dryer Exhaust Vent (Model 5200)



**Picture** windows are fixed, rather than made to be opened and closed, and come in many shapes and sizes.



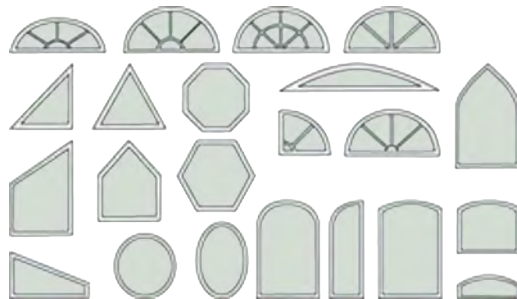
**Awning** windows keep out the rain because they are hinged on top and open out.



**Sliding** windows are similar to double hungs, but both sashes glide from side to side and lift out for easy cleaning.



**Casement** windows provide full ventilation and can be easily cleaned from the inside when cranked out to 90 degrees.

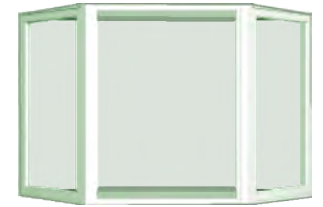


**Architectural Shapes** are fixed picture windows available in many different sizes. They can give your home the fresh new look you desire.





## Bow & Bay Windows



**BOWS & BAYS** are elegant windows that add light and sun to any home.

- All plywood head and seat board in birch or oak finishes (insulation optional).
- Sill has a unique weep system that assures complete moisture and water run-off.
- Turnbuckle support kit includes chain, turnbuckles and hooks recommended for added installation strength.
- Low pressure polyurethane foam sealant between struts for best thermal performance.
- Available with stain matching head board, seat board and edge banding.
- Fully assembled shell.
- Windows are purchased separately and easily jobsite placed into the installed shell.



# Choose a New Patio Door, Too!

**MODEL 6400 SLIDING PATIO DOORS** open your home to the outdoors allowing in natural light and fresh air, creating an inviting entry to your home's patio, deck or courtyard. These attractive doors offer easy upkeep, excellent energy efficiency and the high level of quality you expect from Interstate.

## Standard Features:

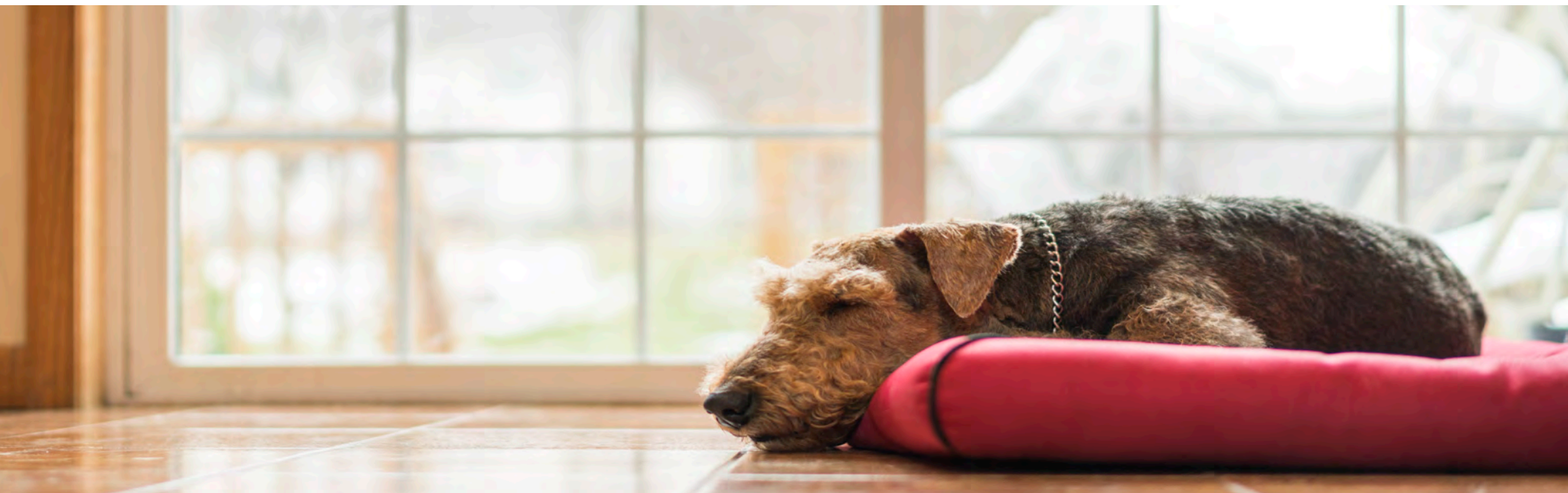
- Keylock
- Multi Point Hardware Lockset
- Deluxe Handle Set
- Fully Welded Frame & Sash
- Extruded Screen with Auto-Latch
- Precision Bearing Rollers
- Endur high efficiency Stainless Steel Glass Spacer
- Field reversible
- Available in White

## Options:

- Footlock
- Extension Jambs
- Custom Paint Colors
- Keyed Alike Option
- Custom sizes up to 16' wide and 8' high
- New Construction Accessories & Trims
- 3½" Casing & Large Brickmold

## Standard Sizes:

- 2-Panel - 5/0 x 6/8; 6/0 x 6/8; 8/0 x 6/8
- 3-Panel - 9/0 x 6/8; 12/0 x 6/8
- 4-Panel - 12/0 x 6/8; 16/0 x 6/8



*Bring Color & Light into Your Home*



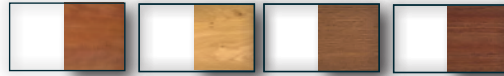
# Color Choices

## Stock Solid Interior and Exterior Colors\*



White Clay

## 4 Stock Interior Laminate Woodgrains\*

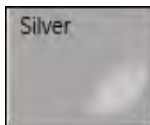


Natural Cherry 209 with White Exterior  
 Winchester Light Oak 211 with White Exterior  
 Dark Oak 273 with White Exterior  
 Cherry 274 with White Exterior

In addition to superior heat reflection, color retention and curb appeal, laminates provide excellent weather resistance, making them ideal for coastal regions.

## PAINT FINISHES

### 14 Stock Exterior Colors\*



Silver - simulated anodized aluminum look

*15-Year Paint Warranty!*

## CUSTOM PAINT FINISHES

**Unlimited Color Match Exteriors** Custom blended colors available to suit your needs, limited only by your imagination!



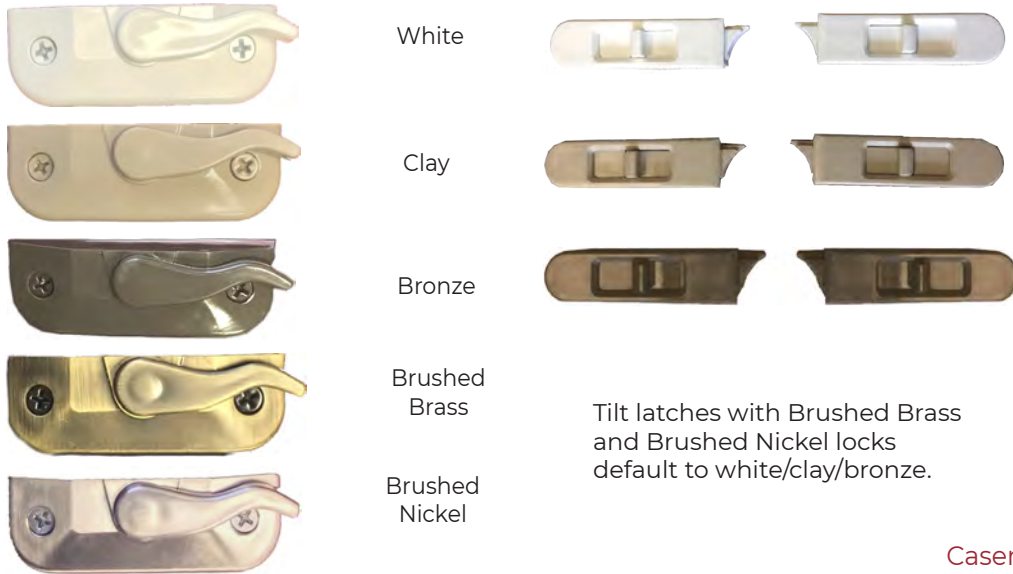
\* Due to printing limitations, all colors and finishes shown are approximate.



# Hardware Choices

InVision windows utilize the most attractive, easiest operating, and highest performing hardware available.

## Standard Double Hung Locks & Tilt Latches\*



## Optional RoboSync Double Hung Locks\*



## Casement/Awning Cranks\*



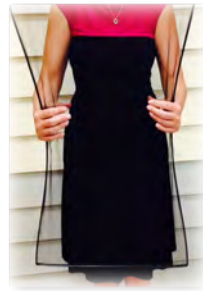
## Casement/Awning Locks\*



**TrueView FLEXSCREEN**  
The world's first flexible window screen!

Standard on all InVision casement, awning and painted windows.

- Eliminates bowed and improper screen fit.
- Effortless installation and easy removal.
- Eliminates unsightly screen frame lines.
- No more bent screen frames.

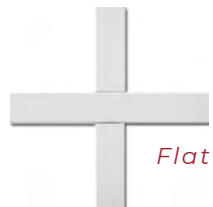


\*Due to printing limitations, all colors and finishes shown are approximate.

# Grid Choices

Grids between glass panes give your InVision Model 6800 windows the look and feel of divided lite windows without the hassle! Because they're between glass panes, these grids allow for easy window cleaning. Our beautiful grids are available in both contoured or flat design and in several distinctive patterns.

Simulated Divided Lites (SDLs) are permanently adhered to the glass panes inside and out and create the appearance of a true multi-paned window.



Flat

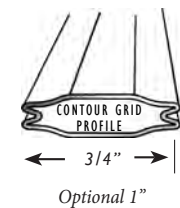
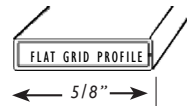


Contour

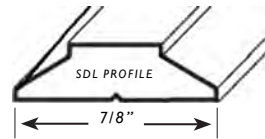


Simulated  
Divided  
Lites  
(SDLs)

## Grids Between Glass



## Simulated Divided Lites



Applied to interior and exterior glass surfaces creating Simulated Divided Lites (SDLs)



Black flat shadow bar between glass panes can be installed when using SDLs to create additional depth and appearance of true divided lites.

## InVision Model 6800 Grids Color Choices:\*

### - Flat Grids

- White
- Clay
- Bronze Exterior/White Interior
- White Exterior/Woodgrain Laminate Interior
- Custom Painted any color

### - Contoured Grids (1)\*

- White
- Clay
- Bronze Exterior/White Interior
- White Exterior/Woodgrain Laminate Interior

### - SDLs (Simulated Divided Lites)

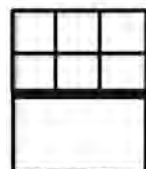
- White (exterior & interior)
- Clay exterior/White interior
- Bronze exterior/White interior
- White exterior/Woodgrain Laminate Interior
- Removable Grids with Frame Surround, interior mounted
- Custom Painted any color

(Refer to [interstatebldg.com/support-library](http://interstatebldg.com/support-library) for additional information)

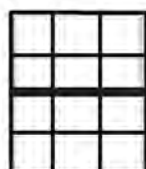
(1) Contour grids not available custom painted.

\* Flat & Contour Grids Between Glass (CBGs) not available in Triple glass patio doors.

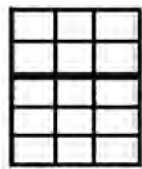
## GRID SUGGESTIONS



Double Hung  
2V 1H  
Top Sash Only



Double Hung  
2V 1H

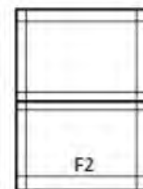


Colonial Grid Patterns

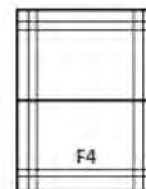
Double Hung  
2V 1H  
Top Sash Only  
  
2V 2H  
Bottom Sash only  
(Oriel Style)



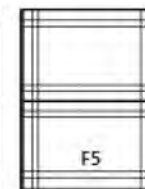
F1



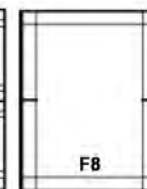
F2



F4



F5



F8

Prairie Grid Patterns

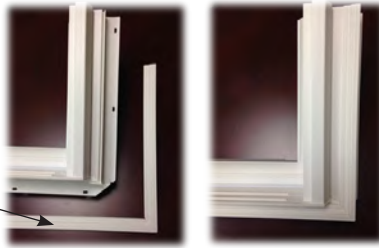
A young child with curly hair is sitting on a windowsill, looking out a window. The window is covered in raindrops, and the view outside is blurred, showing greenery and a body of water. The child is wearing a white long-sleeved shirt and dark pants. The text "New Construction Accessories & Options" is overlaid in the top right corner in a white, cursive font.

*New Construction  
Accessories & Options*

## Small Brick Mold Accessory

Standard small brick mold design surround for windows and doors, factory applied, requires no painting, staining or capping and can receive siding up to 3/4 inch.

- For exterior new construction application
- Available in 16' uncut lengths



## Dry Wall Return - Interior Accessory

Factory applied accessory accepts 1/2" to 5/8" drywall to assure a quality and consistent drywall finish application.

- For interior new construction application
- Available in 16' uncut lengths



## Large Brick Mold Accessory

Offers a large traditional factory welded premium brick mold frame design surround for windows and doors which requires no painting, staining or capping and is applied after installation of the window. It offers a 3/4 inch integral j-channel for siding application.

- For exterior new construction application
- Available in 16' uncut lengths



## Continuous Head & Sill T-Mullion

Allows multiple unit windows to be factory mullied in a single master frame providing a more stable, structural, weather tight unit for installation, as well as smooth horizontal lines and common vertical mullions.

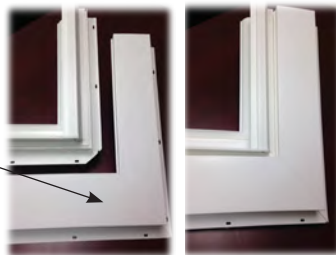


- Available for both replacement and new construction applications

## 3 1/2" Large New England Casing Accessory

A classic premium colonial exterior window frame surround kit applied over the installed vinyl window, this pre-welded picture frame fits over the exterior projected frame and nail fin completing an old-world look. It offers a 3/4 inch integral j-channel for siding application.

- For exterior new construction application
- Available in 16' uncut lengths



## Integral Nail Fin

Available with integral J-channel to receive siding to 3/4 inch.

- For new construction application



## Vinyl Bull Nose Sill

Offers an attractive design on the sill and works to channel water away from the window as well as simulates a traditional wood look.

- For exterior new construction application
- Available in 16' uncut lengths



# Affiliations

InVision windows have been independently laboratory tested and certified to meet or exceed the excellence standards in the window and door industry. This testing follows all guidelines and regulations of the National Fenestration Rating Council (NFRC), a non-profit organization that provides energy performance ratings and determines fenestration code compliance.



In addition to NFRC and independent laboratory testing for air infiltration, structural strength and thermal quality, Interstate windows are 3rd party certified and randomly audited by Keystone Certifications, assuring windows are manufactured as laboratory tested.



We partner with ENERGY STAR, a voluntary program launched by the U.S. Environmental Protection Agency and now managed by the EPA and U.S. Department of Energy that helps businesses and individuals save money and protect the environment through superior energy efficiency.



ENERGY STAR Most Efficient is a distinction that recognizes products that deliver cutting edge energy efficiency along with the latest technological innovation. It is an award that truly represents the very best of ENERGY STAR. All styles of InVision Model 6800 windows with Triple Fuel Saver glass earn the coveted **ENERGY STAR Most Efficient mark for 2022.**



Manufacturing Facility

3000 N. TOWNSHIP BLVD. PITTSTON, PENNSYLVANIA 18640

Sales & Administration Building

3002 N. TOWNSHIP BLVD. PITTSTON, PENNSYLVANIA 18640

Toll Free **800.338.9997** Phone **570.655.2811**

Web [www.interstatebldg.com](http://www.interstatebldg.com)

Interstate donated windows used in the Restoration Pavilion of the Statue of Liberty National Monument.

